

DIRECTOR'S FINDING

SURFACE USE CLOSURE

(FIRE SUPPRESSION – KNOLLS FIRE AREA, UTAH COUNTY)

WDRN 88

The following finding is made pursuant to Utah Code §53C-1-302 and §53C-2-105, which grant the Director broad authority to manage trust lands in a manner which is in the best interest of the beneficiaries.

Beneficiary: Schools

Lands: Those lands described on **Appendix A** and generally depicted on **Appendix B**.

To facilitate the suppression of wildland fire, the State of Utah School and Institutional Trust Lands Administration (“SITLA”) issues this temporary closure to entry. The Knolls Fire is an uncontrolled wildland fire on the eastern slopes of Lake Mountain, located south of Saratoga Springs in Utah County, Utah. Public entry is restricted to protect public safety and to promote effective firefighting.

All public entry into the area should be suspended until the hazardous conditions have been eliminated. This closure will be rescinded when the fire is declared controlled by the incident commander or otherwise rescinded. Adjacent property owners, lessees, grazing permit owners and others reasonably needing to access the area should coordinate with the incident commander to ensure safety.

Fire suppression resources and law enforcement assigned to the Knolls Fire are exempt from this order. Federal, state or local officers or members of an organized rescue or fire suppression or fuels management force are also exempt, while in the performance of their official duties.

This closure is determined to be in the best interest of the trust beneficiaries because it allows for effective firefighting on trust lands affected by the Knolls Fire and aids efforts to stop the spread of wildfire onto additional trust lands. Effective firefighting will protect current and future value of these trust lands, limit resource degradation and reduce necessary reclamation of these lands. For these reasons, I find that the above- mentioned closure is in the best interest of the trust beneficiaries.

This closure is effective immediately and will remain in effect until the Knolls Fire is declared controlled by the incident commander or otherwise officially rescinded.

Dated July 2, 2020



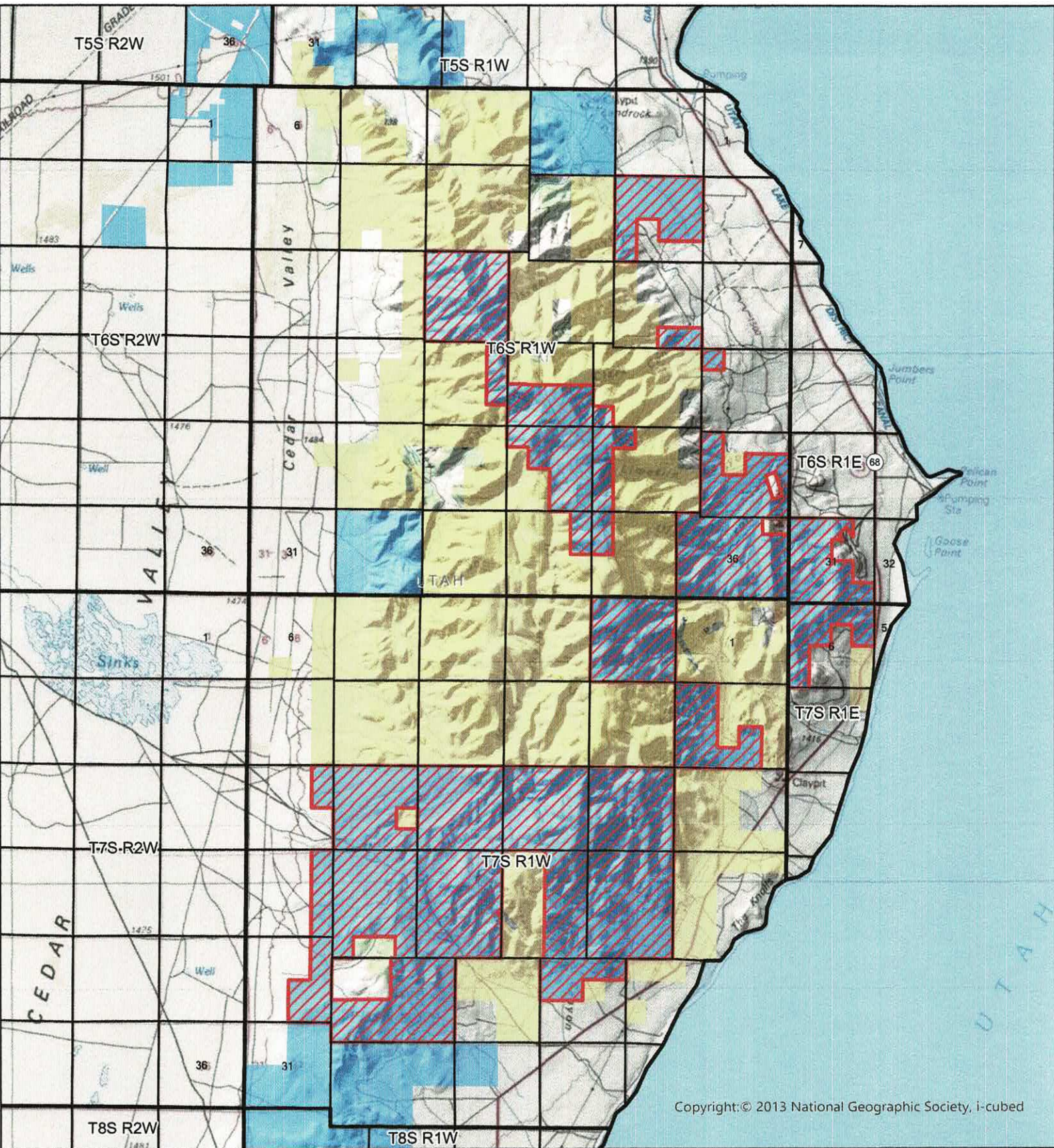
David Ure, Director
School and Institutional Trust Lands Administration

Appendix A
Lands Subject to Closure

T R S	Description
T6S R1E S 31	E2NW4, W2SE4, LOT 2 (SW4NW4), E2SW4, LOT 1 (NW4NW4), LOT 5 (NW4NE4), SE4SE4, LOT 3 (NW4SW4), LOT 4 (SW4SW4)
T6S R1W S 11	LOT 1 (SW4NW4), N2SE4, LOT 3 (SW4SW4), NE4, LOT 2 (NW4SW4), NW4NW4, E2NW4
T6S R1W S 14	LOT 7 (SW4SE4), LOT 8 (SE4SE4)
T6S R1W S 16	ALL
T6S R1W S 21	NE4SE4, SE4NE4, NE4NE4
T6S R1W S 22	NW4SW4, SW4SW4, SE4SW4, SE4, NE4SW4
T6S R1W S 23	SW4SW4
T6S R1W S 24	LOT 1 (NW4NW4)
T6S R1W S 25	LOT 6 (Pt of NW4SE4), SW4SE4, LOT 9 (SE4SE4), LOT 5 (SE4NE4), LOT 1 (NW4NW4), LOT 4 (SW4SW4), LOT 3 (NW4SW4), SW4NE4, E2SW4, LOT 8 (E2NE4SE4), LOT 2 (SW4NW4), LOT 7 (Pt of NE4SE4)
T6S R1W S 26	SW4SW4, NW4SW4, SW4NW4, N2NW4
T6S R1W S 27	N2NE4, SE4, SE4NW4, SW4NE4, SE4NE4, N2NW4
T6S R1W S 34	NE4NE4, SE4NE4
T6S R1W S 35	W2NW4
T6S R1W S 36	LOTS 1-13, SE4, E2SW4
T7S R1E S 6	W2SW4, NW4, NW4NE4, E2NE4
T7S R1W S 12	LOT 11 (SE4SE4), W2, LOT 8 (NE4SE4), LOT 10 (SW4SE4)
T7S R1W S 14	SE4, SW4, N2
T7S R1W S 15	ALL
T7S R1W S 16	ALL
T7S R1W S 17	S2SE4, SW4, N2, NW4SE4
T7S R1W S 18	E2NE4
T7S R1W S 19	E2E2
T7S R1W S 2	ALL
T7S R1W S 20	LOT 12 (S of SW4SW4), LOT 16 (S of SE4SE4), LOT 6 (SE4SW4), LOT 13 (N2NW4SW4), N2, LOT 14 (S2NW4SW4), LOT 5 (SW4SW4), LOT 15 (S of SE4SE4), LOT 8 (SE4SE4), LOT 2 (NW4SE4), LOT 7 (SW4SE4), LOT 3 (NE4SW4), LOT 1 (NE4NE4)
T7S R1W S 21	LOT 9 (S of SE4SE4), N2, LOT 12 (S of SW4SW4), LOT 7 (SW4SE4), LOT 8 (SE4SE4), LOT 4 (NW4SW4), LOT 10 (S of SW4SE4), LOT 6 (SE4SW4), LOT 5 (SW4SW4), LOT 11 (S of SE4SW4), LOT 2 (NW4SE4), LOT 3 (NE4SW4), LOT 1 (NE4SE4)
T7S R1W S 22	LOT 1 (NE4SE4), LOT 2 (NW4SE4), NE4, LOT 10 (S of SW4SE4), LOT 7 (SW4SE4), LOT 9 (S of SE4SE4), LOT 8 (SE4SE4)
T7S R1W S 23	LOT 12 (S of SW4SW4), LOT 6 (SE4SW4), LOT 5 (SW4SW4), N2,

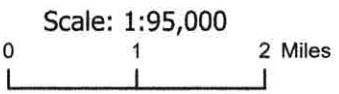
	LOT 4 (NW4SW4), LOT 8 (SE4SE4), LOT 3 (NE4SW4), LOT 1 (NE4SE4), LOT 11 (S of SE4SW4), LOT 9 (S of SE4SE4), LOT 2 (NW4SE4), LOT 10 (S of SW4SE4), LOT 7 (SW4SE4)
T7S R1W S 27	NW4NE4, NE4NE4, NW4
T7S R1W S 29	LOT 12 (W2NW4SW4), LOT 17 (N2NE4NW4), LOT 16 (E2SE4SW4), LOT 13 (W2SW4SW4), LOT 8 (SE4NW4), LOT 18 (S2NE4NW4), E2, LOT 11 (W2NW4SW4), LOT 9 (NE4SW4), LOT 15 (W2SE4SW4), LOT 14 (E2SW4SW4), LOT 10 (NW4SW4)
T7S R1W S 30	E2NE4, SE4

Appendix B: General Depiction of Lands Subject to Closure



Knolls Fire Temporary Trust Lands Closure

-  Knolls Fire Temporary Closure
- Land Ownership and Administration**
 -  Bureau of Land Management
 -  Private
 -  State Trust Lands
 -  State Sovereign Land



Data represented on this map is for REFERENCE USE ONLY and is not suitable for legal, engineering, or surveying purposes. Users of this information should review or consult the primary data and information sources to ascertain the usability of the information. SITLA provides this data in good faith and shall in no event be liable for any incorrect results, or any special, indirect or consequential damages to any party, arising out of or in connection with the use of the inability to use the data hereon. Land parcels, lease boundaries and associated SITLA data layers may have been adjusted to allow for visual "best fit." The Surface Ownership Land Status data (if present) are maintained by SITLA to reflect current trust land status and surface ownership. Lakes, rivers, streams, highways, roads, county and state boundaries are distributed by the Utah Automated Geographic Reference Center and/or other sources as specified. Contour lines (if present) were generated from USGS 10 meter DEM. Please Note: While SITLA seeks to verify data for accuracy and content, discrepancies may exist within the data. Acquiring the most updated SITLA ownership GIS data may require contacting the GIS staff directly 801-538-5100 or TLA-GIS@utah.gov. The SITLA GIS department welcomes your comments and concerns regarding the data and will attempt to resolve issues as they are brought to our attention. Produced: July 01, 2020 - bbediger

Document path: C:\Users\bbiediger\Documents\ArcGIS\Projects\GeneralWorking\GeneralWorking.aprx



United States Department of the Interior
BUREAU OF LAND MANAGEMENT
West Desert District
2370 S Decker Lake Blvd.
West Valley City, UT 84119-2022
<http://www.blm.gov/utah>



In Reply Refer To:
9212 (UTW002)

**FIRE PREVENTION ORDER
CLOSURE TO ENTRY – KNOLLS FIRE AREA, UTAH COUNTY
ORDER NUMBER UTW002-20-03**

EFFECTIVE: June 29, 2020

To facilitate the suppression of wildland fire, the Bureau of Land Management (BLM) West Desert District is issuing this temporary closure to entry. The Knolls Fire is an uncontrolled wildland fire on the eastern slopes of the Lake Mountains, located south of Saratoga Springs in Utah County, Utah. The Incident Commander has requested that public entry be restricted to protect citizens from danger and to promote effective firefighting.

Target shooting, camping, and unnecessary traffic in the area needs to be suspended until the hazardous conditions have been eliminated. This closure will be rescinded when the fire is declared controlled by the incident commander or otherwise officially rescinded. Property owners, grazing permit holders and other citizens with need to access the area will be asked to coordinate with the incident commander to ensure safety.

Part A: Pursuant to regulations of the Department of the Interior found in 43 CFR 9212.2, the following restrictions are hereby immediately in effect:

Closed to public entry: all public land and roadways administered by the Bureau of Land Management in the vicinity of the Knolls Fire in Utah County, Utah are closed to public entry.

Specifically, all BLM administered lands are closed in the area bounded:

- South of Israel Canyon on the east side of the Lake Mountains,
- East of the ridgeline of the Lake Mountains,
- North of the Soldier Pass County Road (approximately mile marker 15 on Highway 68),
- West of Utah Lake;
- all in Utah County, Utah.

Part B: The following person(s) are exempt from this order:

- a. All fire suppression resources assigned to the Knolls Fire,
- b. All local landowners, ranchers, permit holders in coordination with the Incident Command Staff of the Knolls Fire,
- c. The Utah County Sheriff and all officers and staff,
- d. The District Manager may provide an exception to other individuals for a limited duration and area within his jurisdiction in writing,
- e. Any Federal, State, or local officer or member of an organized rescue or fire suppression or fuels management force while in the performance of their official duties.

Part C: This order is effective immediately at 5:00 p.m. of June 29, 2020, and will remain in effect until the Knolls Fire is declared controlled by the incident commander or otherwise officially rescinded. This order is in addition to other fire prevention orders currently in effect.

Violation of the prohibited acts is punishable by a fine of not more than \$1,000 and/or imprisonment of not more than twelve months, or both (43 CFR 9212.4).

Information concerning this Fire Prevention Order - Area Closure may be obtained at the Bureau of Land