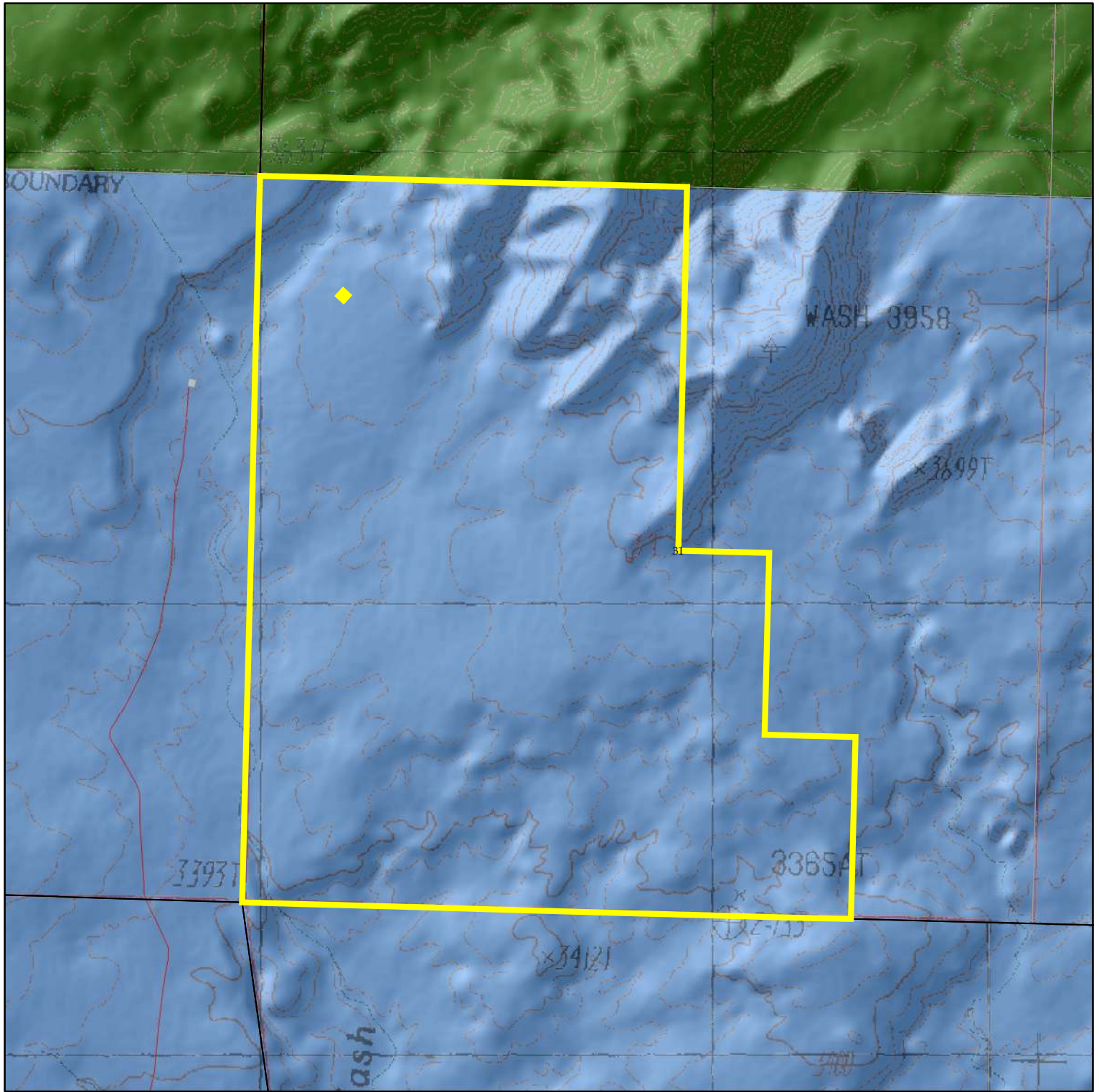



# UTAH TEST & TRAINING RANGE - SITLA EQUALIZATION PARCELS




## PARCEL 6A

### Utah Test & Training Range

 SITLA Equalization Lands

### Land Ownership and Administration

 National Wilderness Area

Private

 State Trust Lands



User: katestaley  
Produced: December 19, 2019 SITLA  
Coordinate System: NAD 1983 UTM Zone 12N, Projection: Transverse Mercator  
Document Name: TestAndTrainingRange\_SITLA\_Appraisal\_FINAL\_8x11



1:12,000

Data represented on this map is for REFERENCE USE ONLY and is not suitable for legal, engineering, or surveying purposes. Users of this information should review or consult the primary data and information sources to ascertain the usability of the information. SITLA provides this data in good faith and shall in no event be liable for any incorrect results, or any special, indirect or consequential damages to any party, arising out of or in connection with the use or the inability to use the data hereon.

Land parcels, lease boundaries and associated SITLA data layers may have been adjusted to allow for visual "best fit." The Surface Ownership Land Status data (if present) are maintained by SITLA to reflect current trust land status and surface ownership. Lakes, rivers, streams, highways, roads, county and state boundaries are distributed by the Utah Automated Geographic Reference Center and/or other sources as specified. Contour lines (if present) were generated from USGS 10 meter DEM, unless otherwise noted.

Please Note: While SITLA seeks to verify data for accuracy and content, discrepancies may exist within the data. Acquiring the most updated SITLA ownership GIS data may require contacting the GIS staff directly 801-538-5100 or TLA-GIS@utah.gov. The SITLA GIS department welcomes your comments and concerns regarding the data and will attempt to resolve issues as they are brought to our attention.