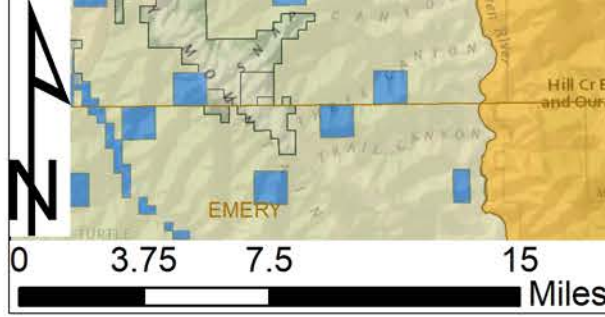
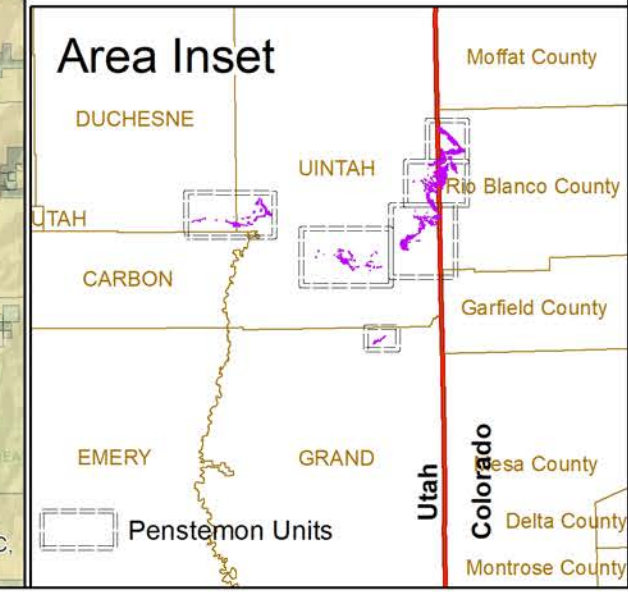
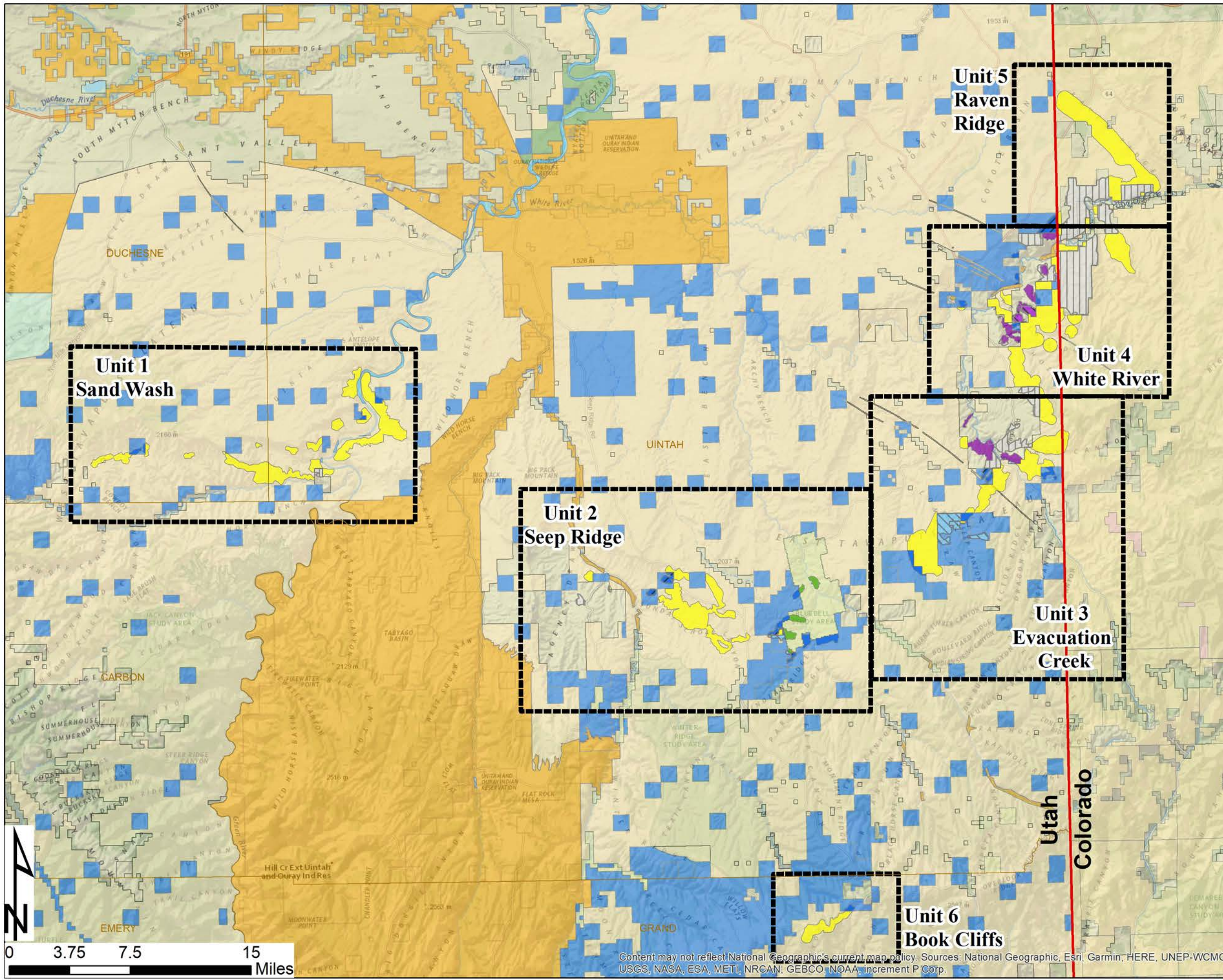


Penstemon Conservation Agreement Areas- 2019

- BLM Conservation Area
- DWR Surface Conservation Area
- Private Conservation Area
- Private Interim Area
- Private Non-Conservation Area
- SITLA Conservation Area
- SITLA Interim Area – Class A
- SITLA Interim Area – Class B




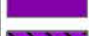






LandOwnership

- BLM
- National Wildlife Refuge
- Private
- State Sovereign Land
- State Trust Lands
- State Wildlife Reserve Management Area
- Tribal Lands




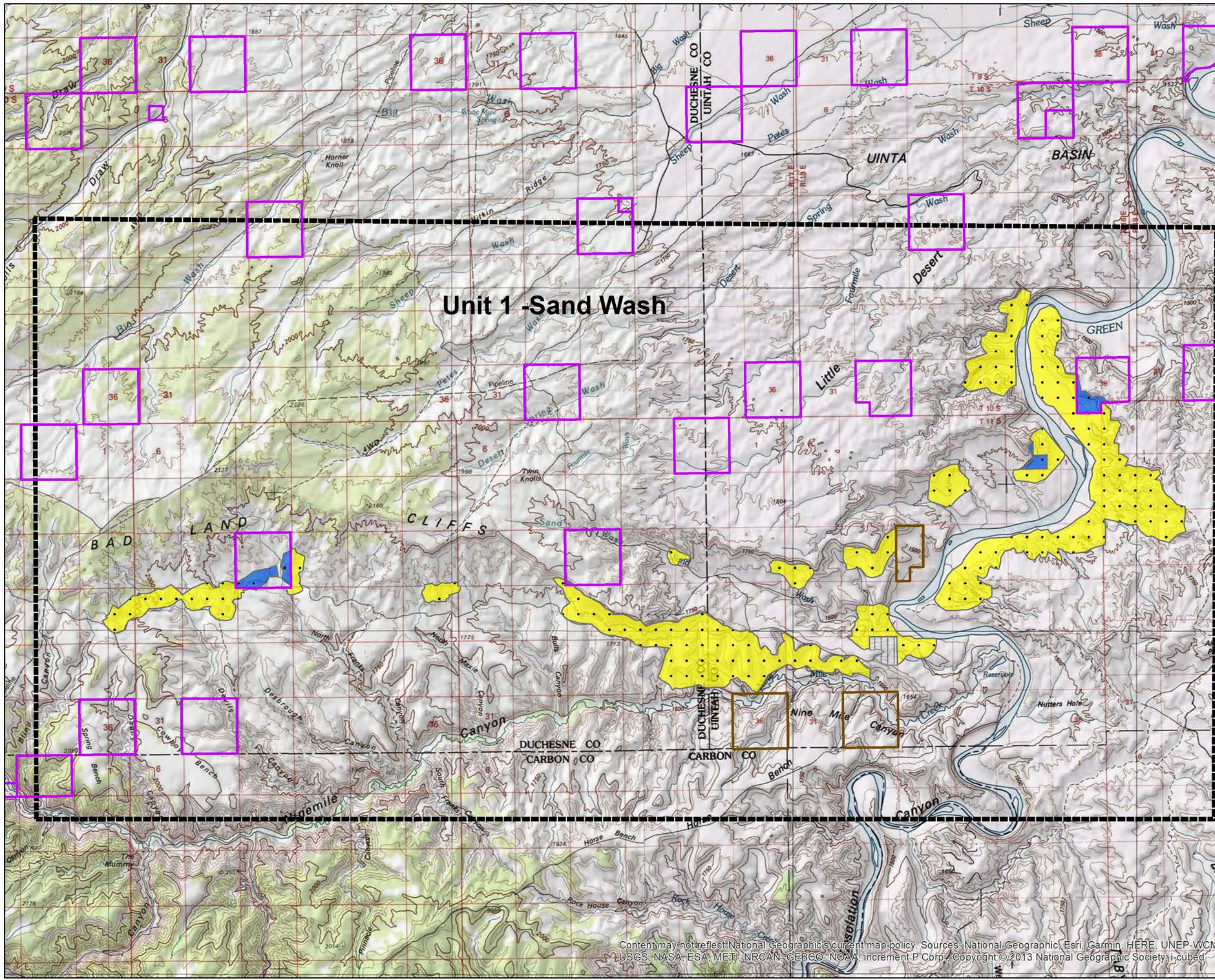
Content may not reflect National Geographic's current map policy. Sources: National Geographic, Esri, Garmin, HERE, UNEP-WCMC, USGS, NASA, ESA, METI, NRCAN, GEBCO, NOAA, increment P Corp.

Penstemon Conservation Agreement Areas- 2019

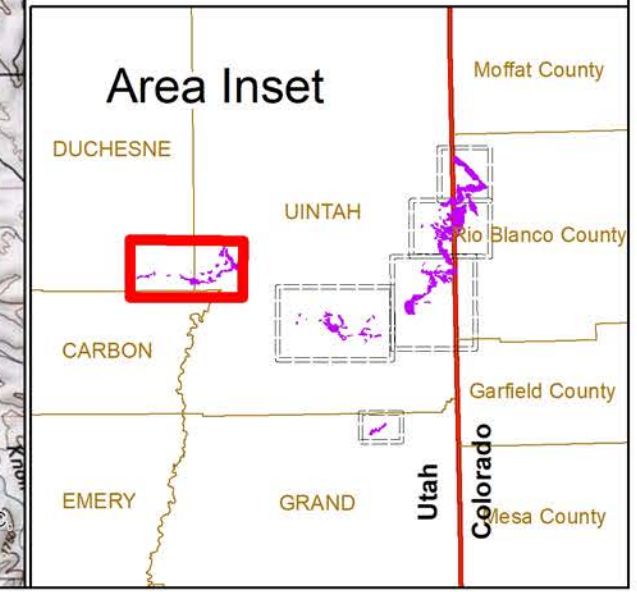
-  BLM Conservation Area
-  DWR Surface Conservation Area
-  Private Conservation Area
-  Private Interim Area
-  Private Non-Conservation Area
-  SITLA Conservation Area
-  SITLA Interim Area – Class A
-  SITLA Interim Area – Class B
-  Additional 2.5% Disturbance Cap
-  Additional 5% Disturbance Cap

Land Management

-  SITLA Recreation Exchange Lands
-  SITLA Active Oil Shale Leases
-  SITLA Active Oil and Gas Leases



Unit 1 - Sand Wash

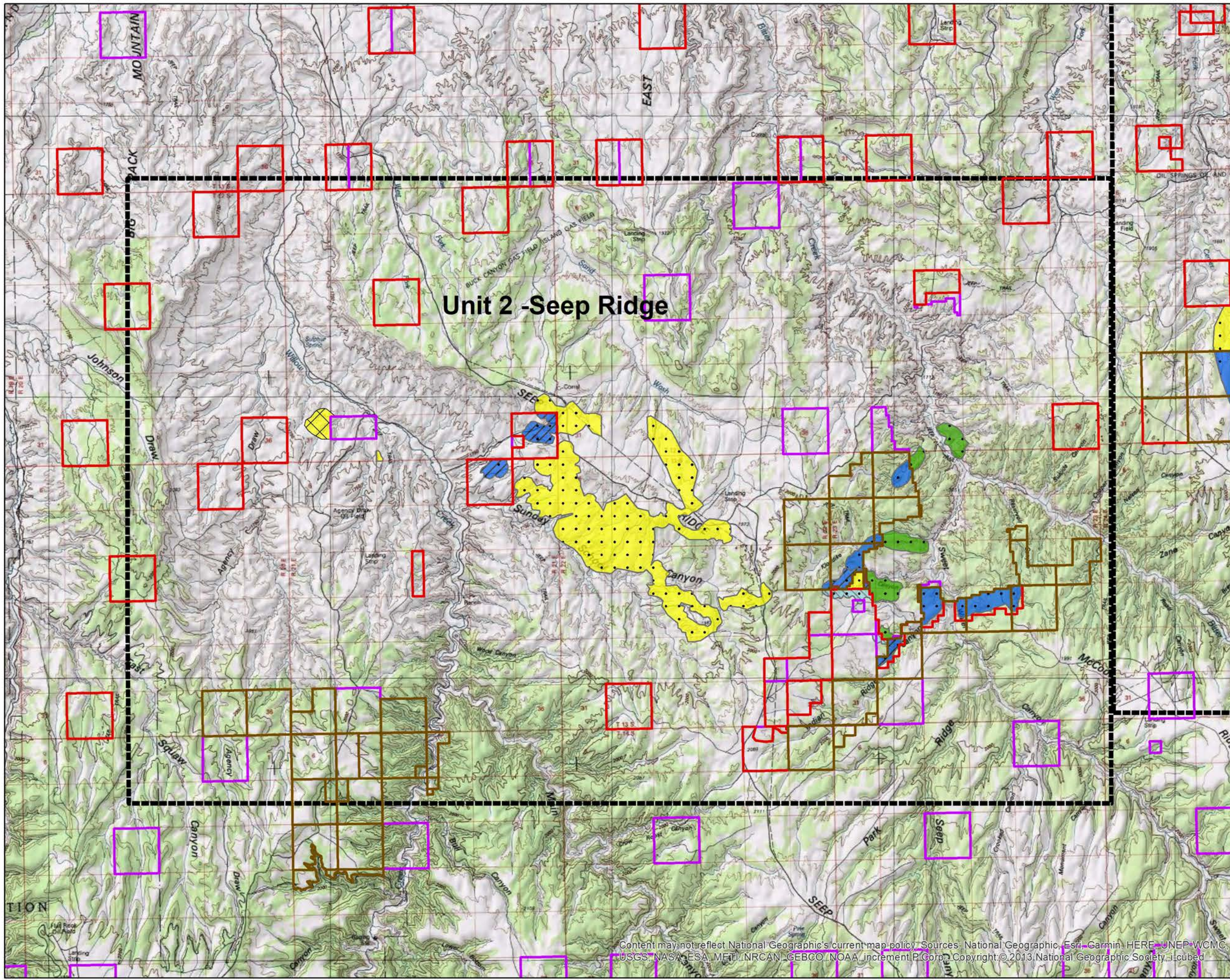
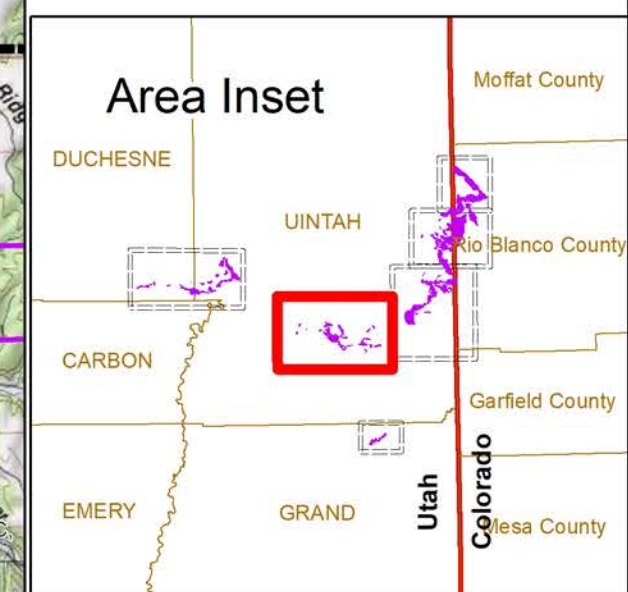
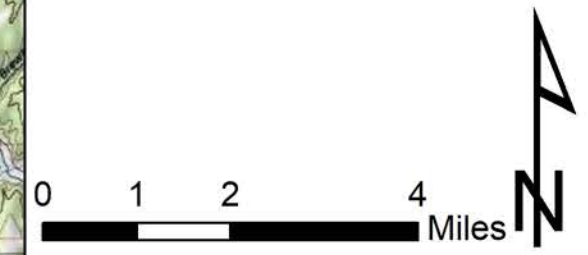


Content may not reflect National Geographic's current map policy. Sources: National Geographic, Esri, Garmin, HERE, UNEP-WCMC, USGS, NASA, ESA, METI, NRCAN, GEBCO, NOAA, increment P Corp. Copyright © 2013 National Geographic Society. I-cubed

Penstemon Conservation Agreement Areas- 2019

- BLM Conservation Area
 - DWR Surface Conservation Area
 - Private Conservation Area
 - Private Interim Area
 - Private Non-Conservation Area
 - SITLA Conservation Area
 - SITLA Interim Area – Class A
 - SITLA Interim Area – Class B
 - Additional 2.5% Disturbance Cap
 - Additional 5% Disturbance Cap
-
- Land Management**
- SITLA Recreation Exchange Lands
 - SITLA Active Oil Shale Leases
 - SITLA Active Oil and Gas Leases

Unit 2 -Seep Ridge



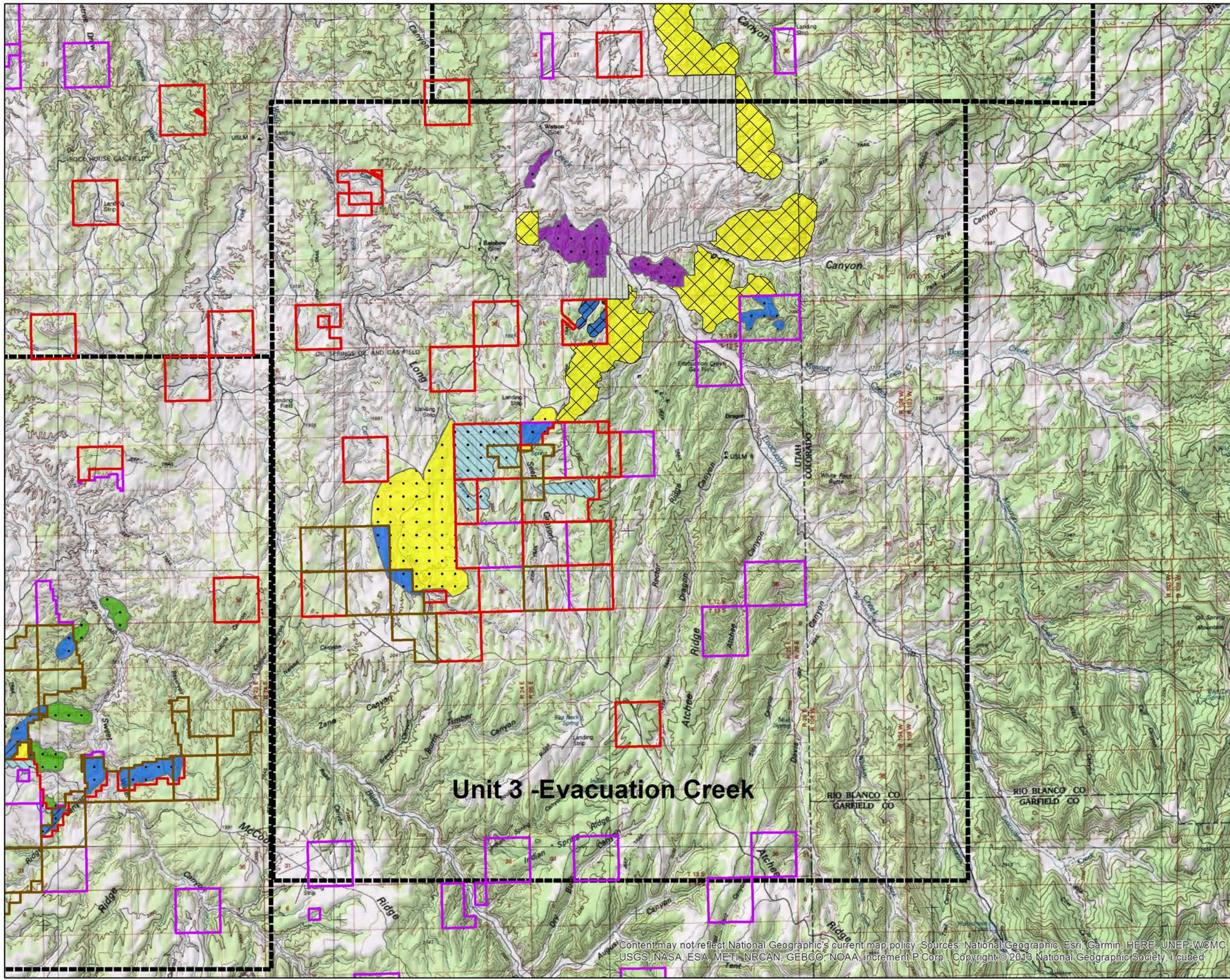
Content may not reflect National Geographic's current map policy. Sources: National Geographic, Esri, Garmin, HERE, UNEP-WCMC, USGS, NASA, ESA, METI, NRCAN, GEBCO, NOAA, increment P Corp. Copyright © 2013 National Geographic Society. i-cubed

Penstemon Conservation Agreement Areas- 2019

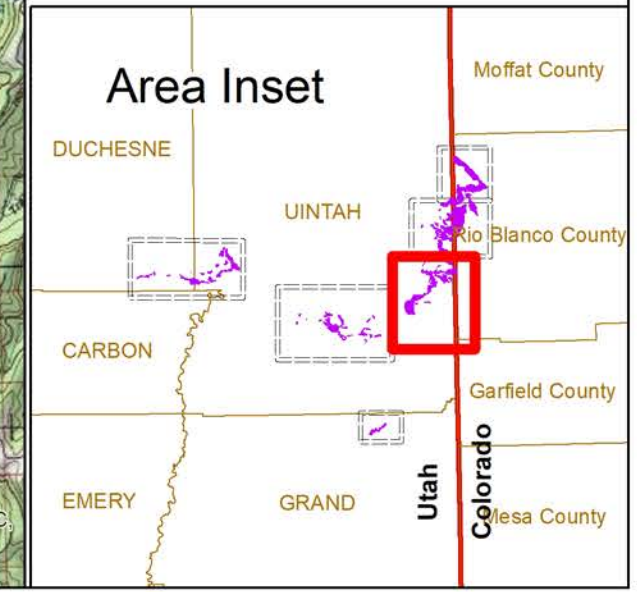
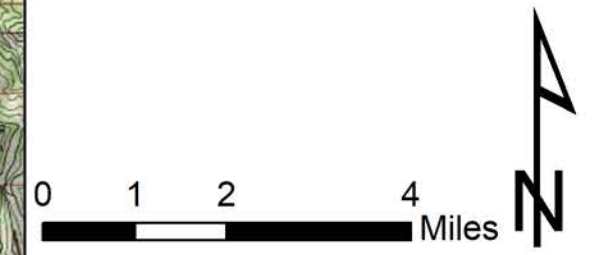
- BLM Conservation Area
- DWR Surface Conservation Area
- Private Conservation Area
- Private Interim Area
- Private Non-Conservation Area
- SITLA Conservation Area
- SITLA Interim Area – Class A
- SITLA Interim Area – Class B
- Additional 2.5% Disturbance Cap
- Additional 5% Disturbance Cap

Land Management

- SITLA Recreation Exchange Lands
- SITLA Active Oil Shale Leases
- SITLA Active Oil and Gas Leases



Unit 3 -Evacuation Creek



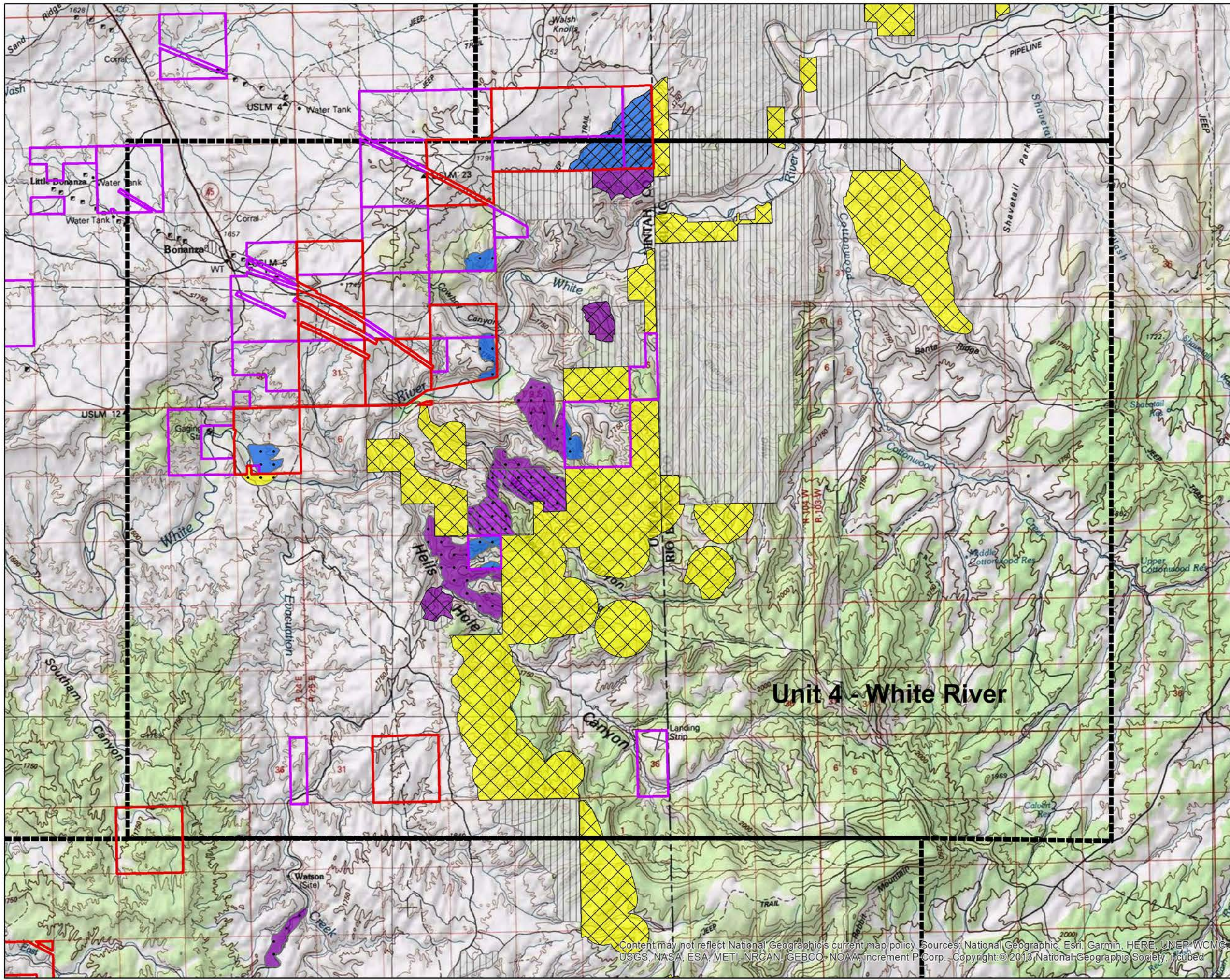
Content may not reflect National Geographic's current map policy. Sources: National Geographic, Esri, Garmin, HERE, UNEP-WCMC, USGS, NASA, ESA, METI, NRCAN, GEBCO, NOAA, increment P Corp., Copyright © 2013 National Geographic Society, iCubed

Penstemon Conservation Agreement Areas- 2019

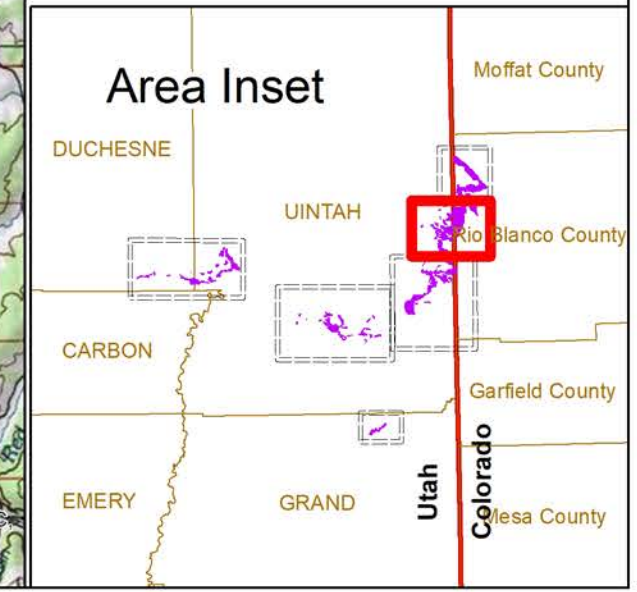
- BLM Conservation Area
- DWR Surface Conservation Area
- Private Conservation Area
- Private Interim Area
- Private Non-Conservation Area
- SITLA Conservation Area
- SITLA Interim Area – Class A
- SITLA Interim Area – Class B
- Additional 2.5% Disturbance Cap
- Additional 5% Disturbance Cap

Land Management

- SITLA Recreation Exchange Lands
- SITLA Active Oil Shale Leases
- SITLA Active Oil and Gas Leases



Unit 4 - White River



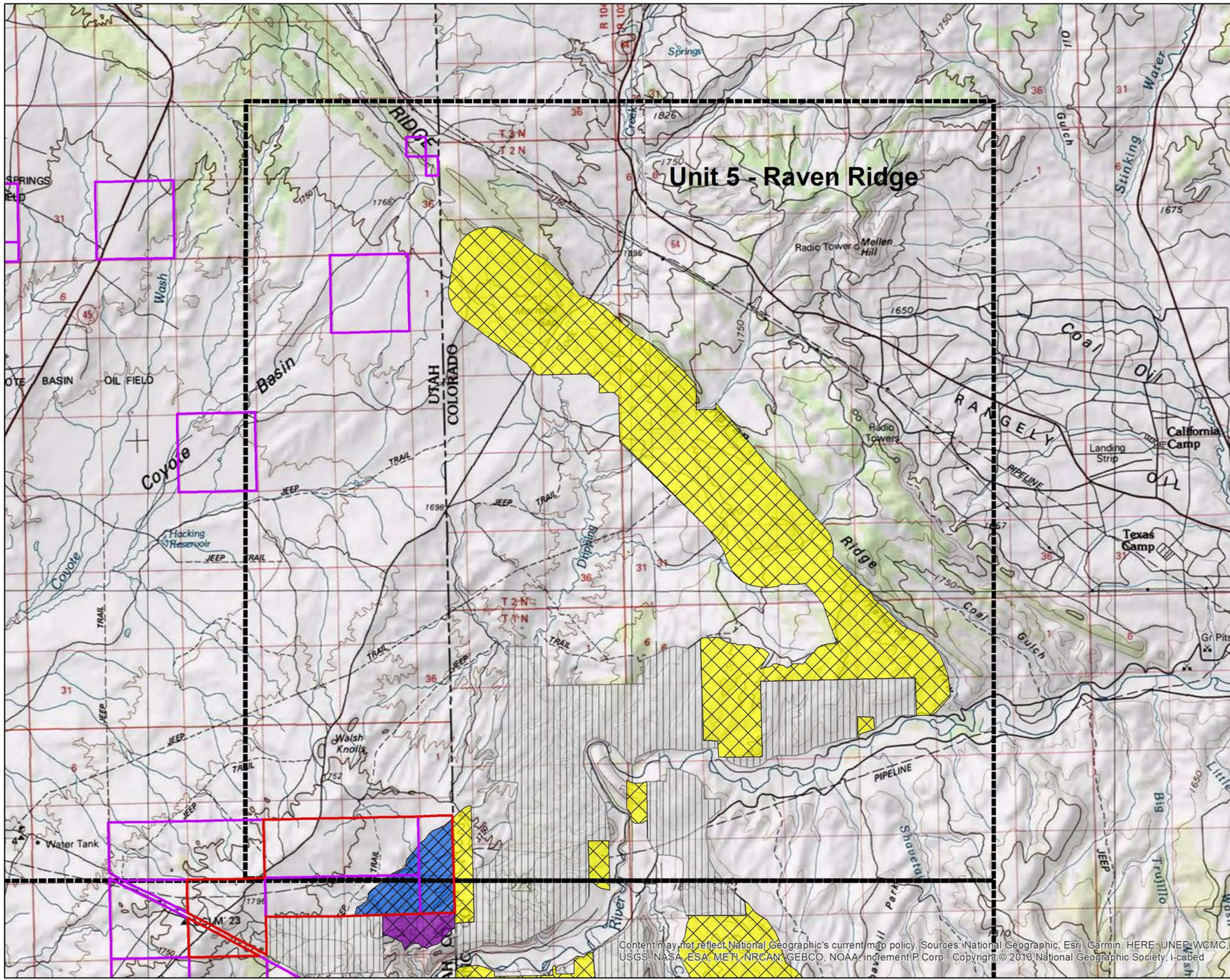
Content may not reflect National Geographic's current map policy. Sources: National Geographic, Esri, Garmin, HERE, UNEP-WCMC, USGS, NASA, ESA, METI, NRCAN, GEBCO, NOAA, increment P Corp., Copyright © 2013 National Geographic Society, iStock

Penstemon Conservation Agreement Areas- 2019

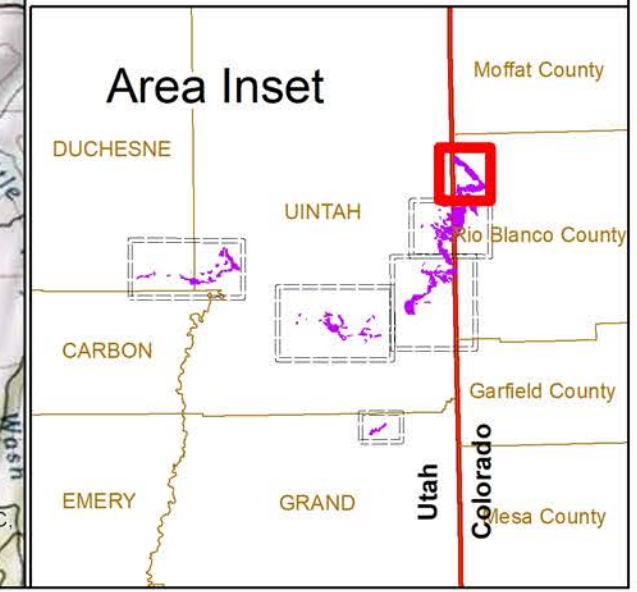
- BLM Conservation Area
- DWR Surface Conservation Area
- Private Conservation Area
- Private Interim Area
- Private Non-Conservation Area
- SITLA Conservation Area
- SITLA Interim Area – Class A
- SITLA Interim Area – Class B
- Additional 2.5% Disturbance Cap
- Additional 5% Disturbance Cap

Land Management

- SITLA Recreation Exchange Lands
- SITLA Active Oil Shale Leases
- SITLA Active Oil and Gas Leases




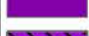








Unit 5 - Raven Ridge






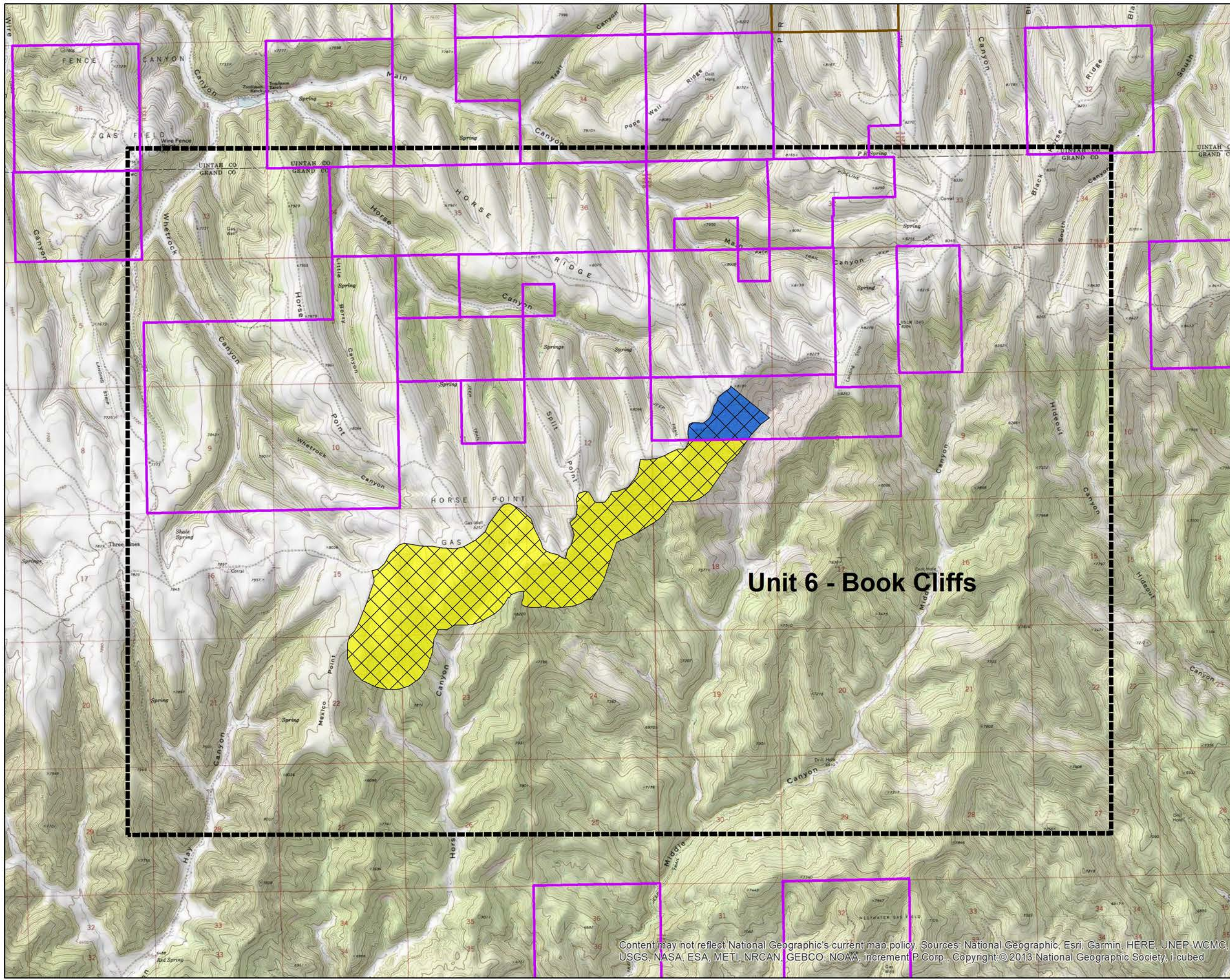
Content may not reflect National Geographic's current map policy. Sources: National Geographic, Esri, Garmin, HERE, UNEP-WCMC, USGS, NASA, ESA, METI, NRCAN, GEBCO, NOAA, increment P Corp., Copyright © 2013 National Geographic Society, i-cubed

Penstemon Conservation Agreement Areas- 2019

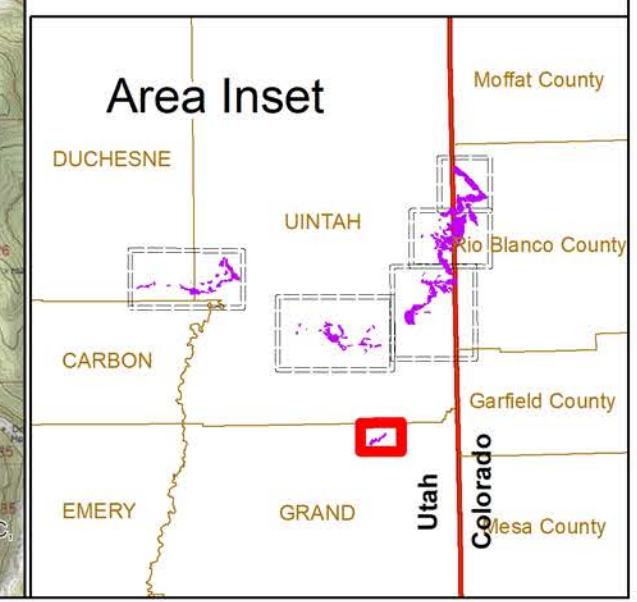
-  BLM Conservation Area
-  DWR Surface Conservation Area
-  Private Conservation Area
-  Private Interim Area
-  Private Non-Conservation Area
-  SITLA Conservation Area
-  SITLA Interim Area – Class A
-  SITLA Interim Area – Class B
-  Additional 2.5% Disturbance Cap
-  Additional 5% Disturbance Cap

Land Management

-  SITLA Recreation Exchange Lands
-  SITLA Active Oil Shale Leases
-  SITLA Active Oil and Gas Leases



Unit 6 - Book Cliffs



Content may not reflect National Geographic's current map policy. Sources: National Geographic, Esri, Garmin, HERE, UNEP-WCMC, USGS, NASA, ESA, METI, NRCAN, GEBCO, NOAA, increment P Corp., Copyright © 2013 National Geographic Society, i-cubed