



U.S. Department of the Interior
Bureau of Land Management

News Release

Monticello Field Office, Utah

FOR IMMEDIATE RELEASE
February 14, 2019

Contact: Lisa Bryant
(435) 259-2187

Announcing avoidance areas to protect raptors *The BLM requests the public's help as nesting season begins*

MONTICELLO, Utah – Each spring raptors return to the Indian Creek area for nesting. Eagles, falcons, and other migratory birds use shallow depressions on ledges, cliffs and rock walls, and often return to the same site year after year to raise their young. The BLM requests that hikers and climbers voluntarily avoid nest sites during critical nesting periods, typically in early March through late July. Avoiding use of certain climbing routes and hikes will help ensure successful fledging of young birds.

BLM biologists will begin surveying nesting areas in March to determine which historic nest sites are active. Typically, by late April or early May, biologists can determine which nest sites birds have chosen to use. Walls and climbing routes without active nests will be cleared for climbing at this time. The BLM requests that climbers avoid walls with active nests until the young birds have fledged, usually by late summer. Biologists will monitor nesting activity throughout the season and keep the climbing community and public informed of potential changes. Notices will also be posted at trailhead areas.

Beginning March 1, the public will be asked to avoid climbing the following walls in the Indian Creek area where birds are known to nest: The Wall, Far Side, Second Meat Wall, Disappointment Cliff, Fin Wall, Broken Tooth, Cat Wall, Slug Wall, and Reservoir Wall. The BLM is coordinating these raptor protection efforts with the Utah School and Institutional Trust Lands Administration, the administrator of the Disappointment Cliffs and portions of the Second Meat Wall climbing areas.

While falcons and eagles are not overly common sights in southeastern Utah, they are present throughout the area and keen eyed observers are sometimes rewarded with their aerial acrobatics. Visitors can watch adult birds hunt or observe the antics of young raptors perfecting their flying techniques. The BLM would like to remind the public to respect wildlife and retain a safe viewing distance. These species in Utah continue to recover from low population levels, thanks in part to cooperation from the public, climbing communities and governmental partners.

For questions about raptors and migratory bird habitat in the Monticello area, please contact Melissa Wardle or Thomas Plank with the BLM Monticello Field Office at 435-587-1500. A map depicting climbing avoidance areas is provided with this release.

Persons who use a telecommunications device for the deaf (TDD) may call the Federal Relay Service (FRS) at 1-800-877-8339 to leave a message or question. The FRS is available 24 hours a day, seven days a week. Replies are provided during normal business hours.

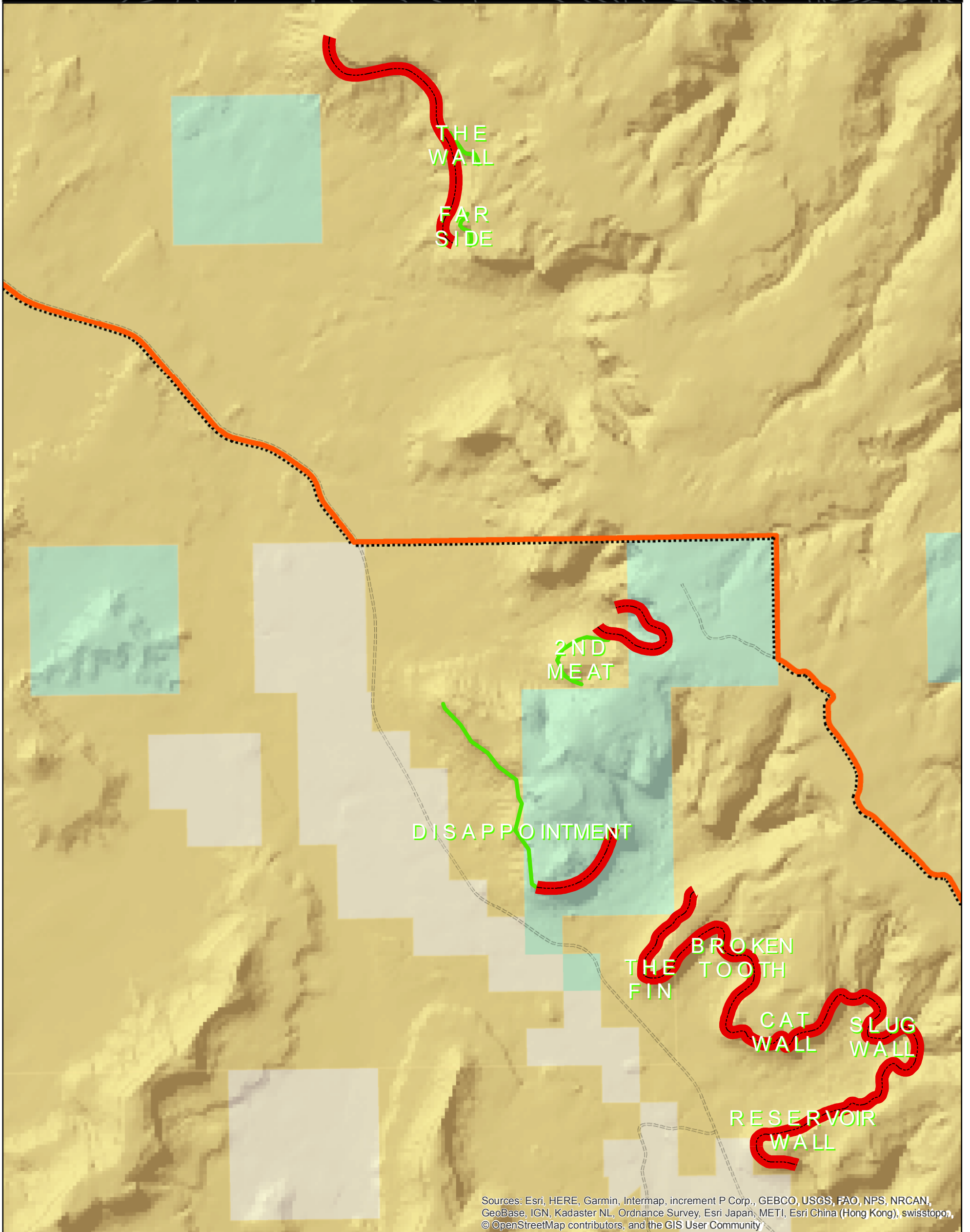
The BLM manages more than 245 million acres of public land located primarily in 12 Western states, including Alaska. The BLM also administers 700 million acres of sub-surface mineral estate throughout the nation. The agency's mission is to sustain the health, diversity, and productivity of America's public lands for the use and enjoyment of present and future generations. Diverse activities authorized on these lands generated \$96 billion in sales of goods and services throughout the American economy in fiscal year 2017. These activities supported more than 468,000 jobs.

-BLM-

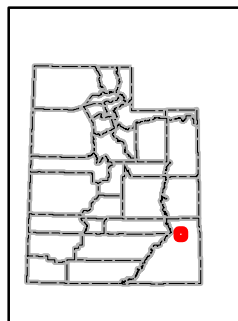
Follow us on Twitter, Facebook, and Flickr [@BLMUtah](#)








Indian Creek Climbing Avoidance Areas, Starting March 1, 2019



Sources: Esri, HERE, Garmin, Intermap, increment P Corp., GEBCO, USGS, FAO, NPS, NRCAN, GeoBase, IGN, Kadaster NL, Ordnance Survey, Esri Japan, METI, Esri China (Hong Kong), swisstopo, © OpenStreetMap contributors, and the GIS User Community



Legend

-  Avoid Climbing In These Areas
-  Bureau of Land Management (BLM)
-  Private
-  SITLA
-  Bears Ears National Monument Boundary



No warranty is made by the Bureau of Land Management as to the accuracy, reliability, or completeness of these data for individual use or aggregate use with other data.